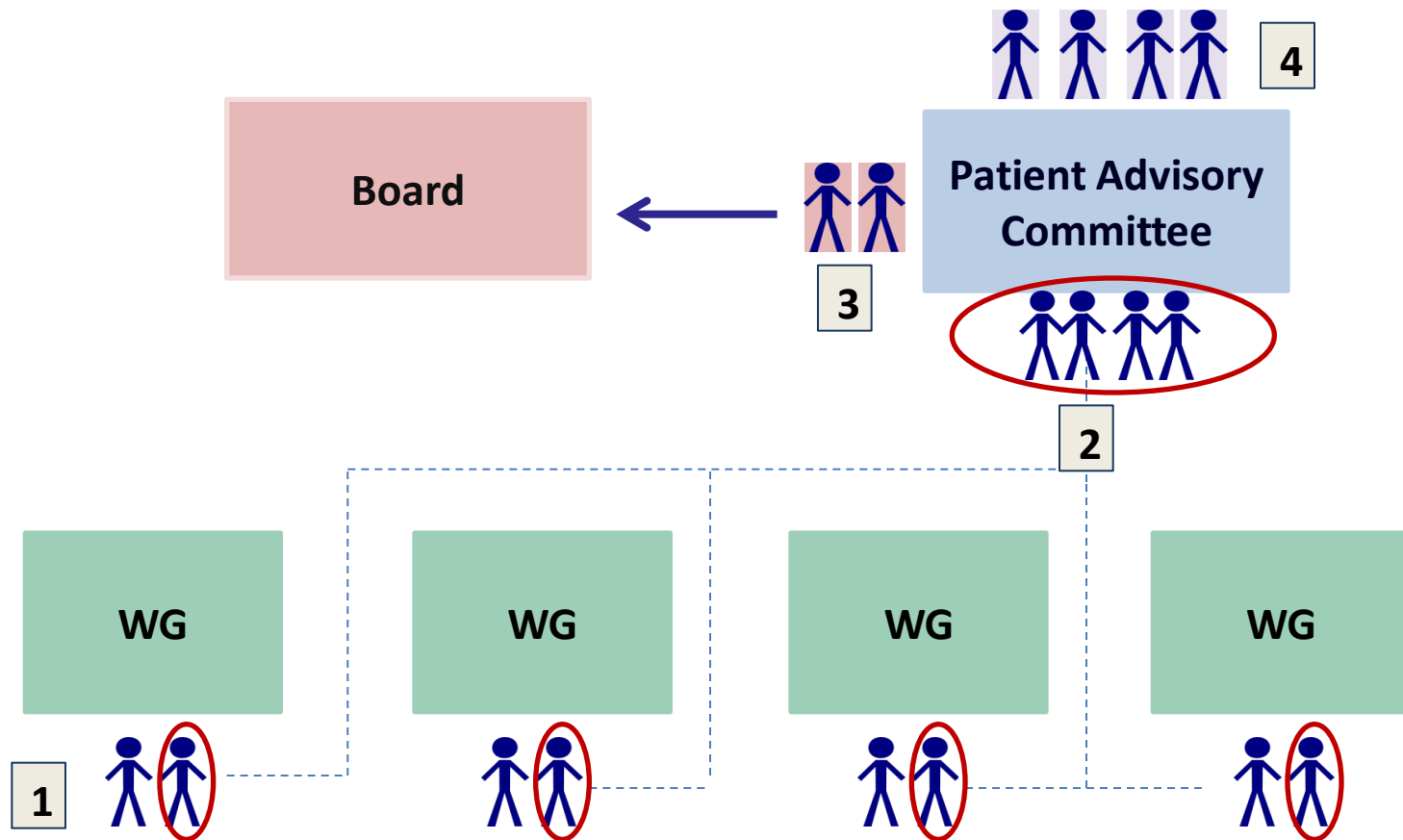


Patient/Caregiver Partner Roles in the Alliance



- 1) One of the two patient partners (PP) in the Working Group (WG) can take turns to attend the Patient Advisory Committee.
- 2) The WG PPs attend the Patient Advisory Committee 3 x year).
- 3) Two co-chairs for the Patient Advisory Committee are recruited and attend the monthly Board meetings
- 4) Four additional members complete the Patient Advisory Committee and attend meetings 3x year.